

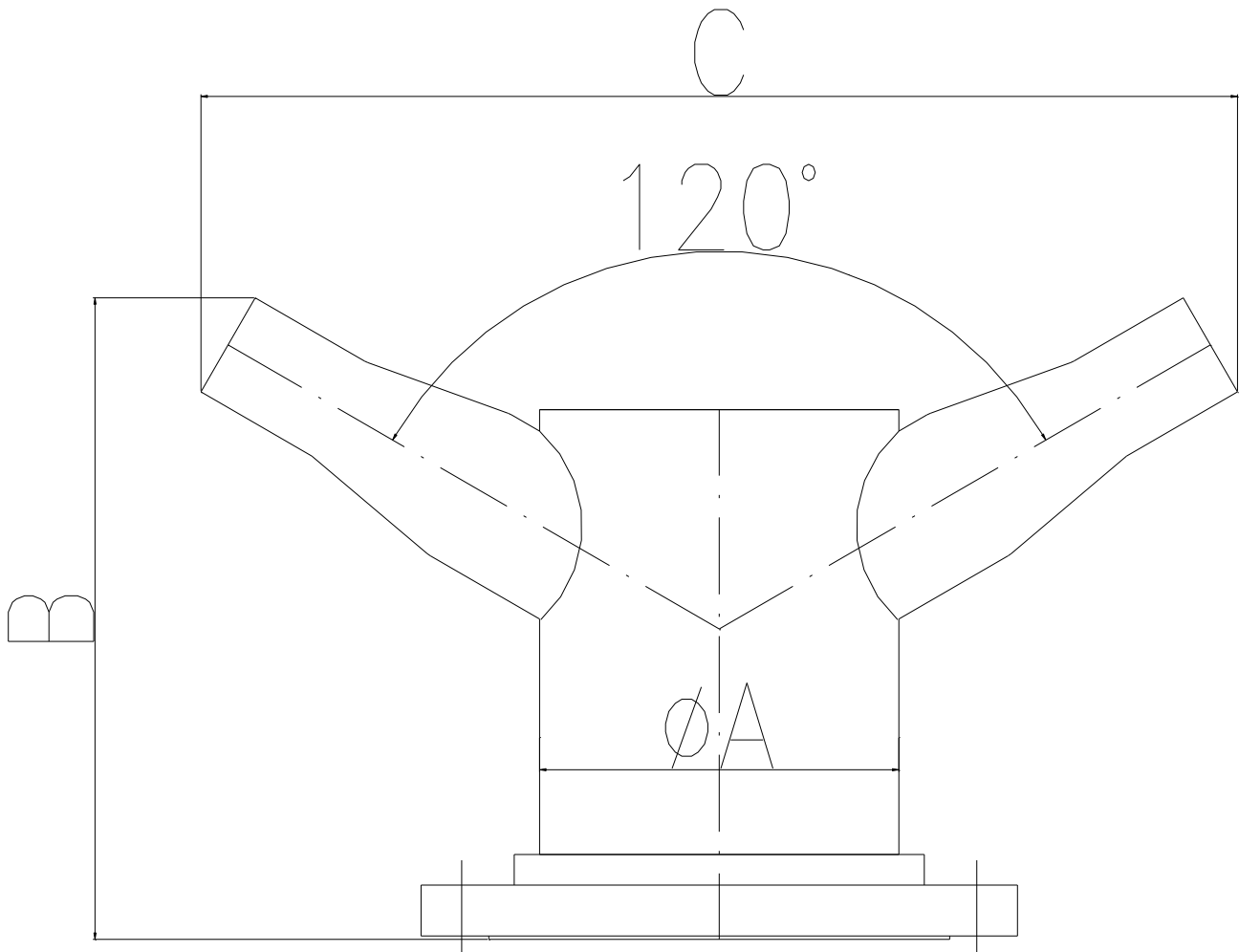
Caratteristiche Tecniche

Corpo: Acciaio al Carbonio- AISI 304 / 316
 Flangia Ingresso ANSI 150 RF o UNI - DIN
 Materiale flange: ASTM A 105 - AISI 304/316
 Verniciatura : 1 mano di Fondo epossidico,
 2 mani di smalto poliuretano RAL 3000
 Versione Inox : finitura satinata

Technical Characteristics

Body: Carbon Steel – AISI 304 / 316
 Inlet flange ANSI 150 RF or UNI - DIN
 Flange material: ASTM A 105 - AISI 304/316
 Painting ; 1 coat of epoxy primer and
 2 coats of polyurethanic enamel RAL 3000
 Stainless steel version : Brushed surface finish

MODELLO <i>MODEL</i>	A <i>MM</i>	A <i>MM</i>	A <i>MM</i>	PESO Kg. <i>WEIGHT Kg</i>
USB B020	3"	3"	230	7
USB B040	4"	4"	287	14
USB B060	6"	6"	402	26
USB B150	8"	8"	518	54
USB B200	10"	10"	620	77



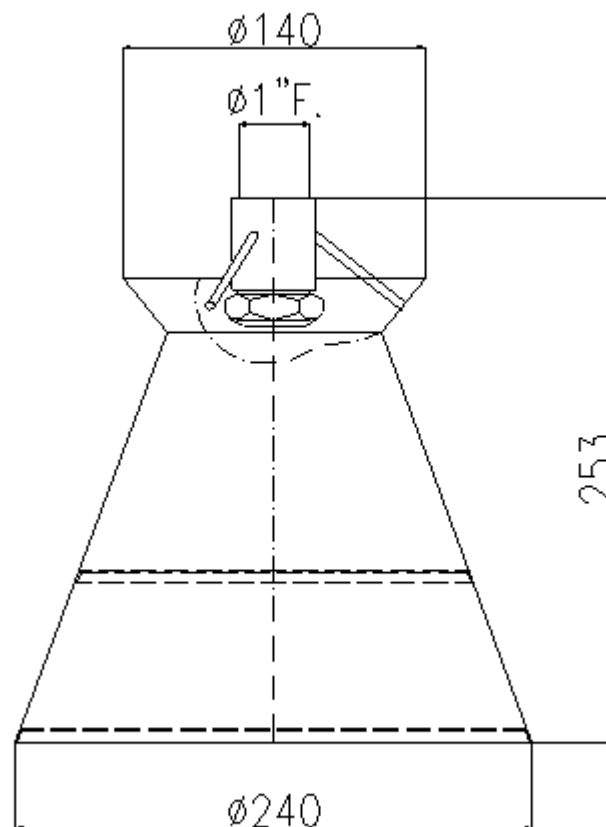
Caratteristiche Tecniche

Corpo: Acciaio al Carbonio- AISI 304 /316
 Flangia Ingresso ANSI 150 RF o UNI - DIN
 Materiale flange: ASTM A 105 - AISI 304/316
 Verniciatura : 1 mano di Fondo epossidico,
 2 mani di smalto poliuretano RAL 3000
 Versione Inox : finitura satinata

Technical Characteristics

Body: Carbon Steel – AISI 304 /316
 Inlet flange ANSI 150 RF or UNI - DIN
 Flange material: ASTM A 105 - AISI 304/316
 Painting ; 1 coat of epoxy primer and
 2 coats of polyurethanic enamel RAL 3000
 Stainless steel version : Brushed surface finish

MODELLO <i>MODEL</i>	A <i>MM</i>	B <i>MM</i>	C <i>MM</i>	PESO Kg. <i>WEIGHT Kg</i>
USB C020	4"	300	420	7
USB C040	6"	300	485	14



Caratteristiche Tecniche

Corpo: Acciaio al Carbonio- AISI 304 /316
 Ingresso : diam. 1" Gas F.
 Materiale attacco: ASTM A 105 - AISI 304/316
 Portata miscela : 80 Lt/1' @ 5 bar
 Rapporto di espansione : 1:70 circa
 Verniciatura : 1 mano di Fondo epossidico,
 2 mani di smalto poliuretano RAL 3000
 solo versione in Acciaio al Carbonio
 Versione Inox : finitura satinata

Technical Characteristics

Body: Carbon Steel – AISI 304 /316
 Inlet : diam. 1" Gas F.
 Inlet material: ASTM A 105 - AISI 304/316
 Mixture flow rate : 80 Lt/1' @ 5 bar
 Expansion ratio : 1: 70 approx.
 Painting ; 1 coat of epoxy primer and
 2 coats of polyurethanic enamel RAL 3000
 only for Carbon Steel execution
 Stainless steel version : Brushed surface finish