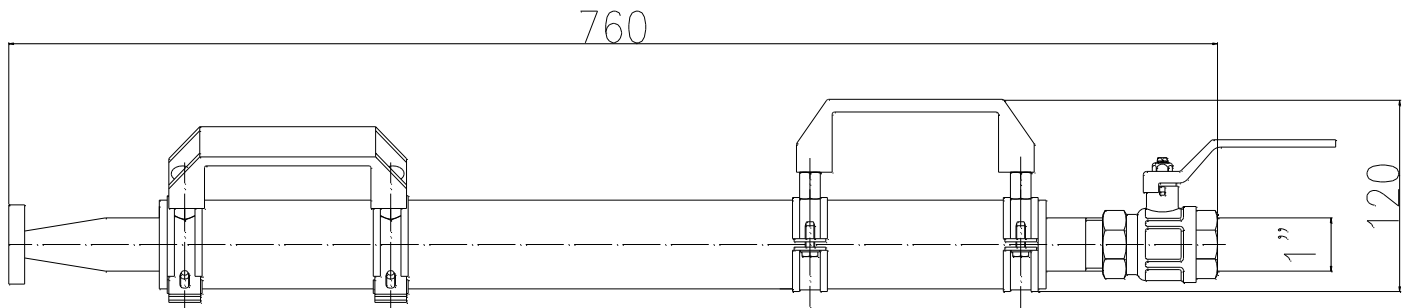


LANCIA A VAPORE MOD. DM
STEAM BRANCHPIPE MOD. DM

Data Sheet
055

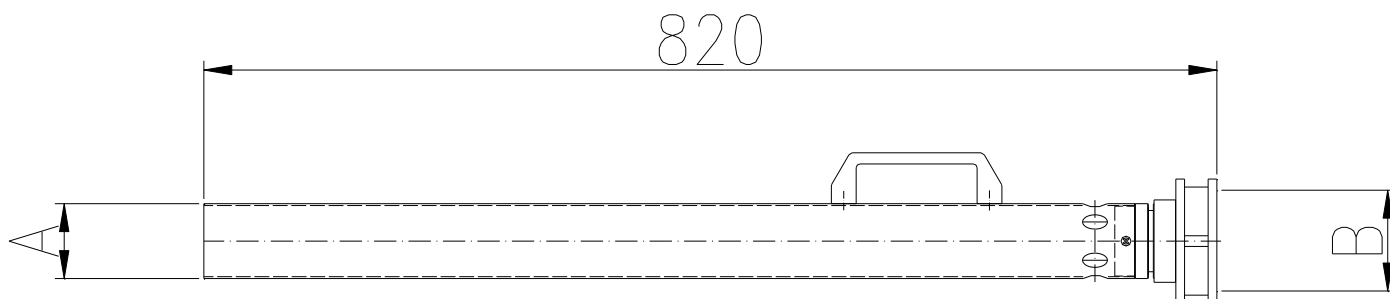


Caratteristiche Tecniche

Corpo: Acciaio al Carbonio
 Bocchello : acciaio al carbonio
 Attacco di ingresso: 1" Gas F.
 Diametro corpo ; 1"
 Impugnatura isolata termicamente
 Doppia maniglia di supporto
 Valvola a sfera intercettazione alta pressione
 Peso approssimativo : 6.5 kg.
 Verniciatura flangia : 1 mano di Fondo epossidico,
 2 mani di smalto poliuretano RAL 3000

Technical Characteristics

Body: Carbon steel
 Steam nozzle : Carbon steel
 Inlet thread : 1" Gas F.
 Body size : 1"
 Heat insulated body
 Double holding handles
 High pressure shut off valve
 Approx. Weight : 6.5 kg.
 Flange Painting ; 1 coat of epoxy primer and
 2 coats of polyurethanic enamel RAL 3000



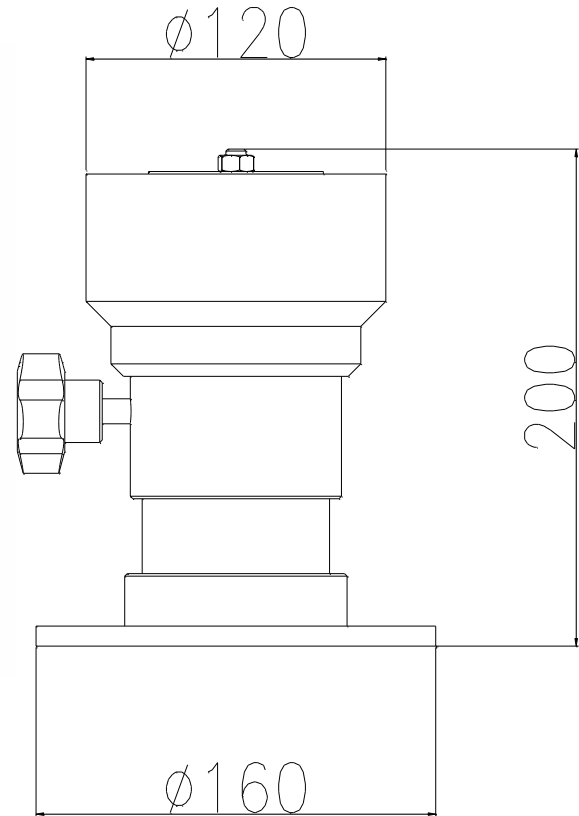
Caratteristiche Tecniche

Corpo: Acciaio inox AISI 304/316
Ugello : lega di alluminio
Attacco di ingresso: UNI o a richiesta
Diametro corpo ; 1½"o 2"
Impugnatura in tecnopolimero
Peso approssimativo : 6 kg.
Finitura superficiale spazzolata

Technical Characteristics

Body: Stainless steel AISI 304 /316
Foam nozzle : aluminium alloy
Inlet coupling: UNI or upon request
Body size : 1½" or 2"
Technopolymer handle
Approx. Weight : 6 kg.
Brushed surface finishing

MODELLO MODEL	PORTATA IT/1' CAPACITY IT/1'	RAPP. ESPANSIONE EXPANSION RATIO	A	B	PESO Kg. WEIGHT Kg.
URB-PA32 B3	200	1 : 8	1½"	UNI45	4.5
URB-PA34 B3	400	1 : 8	2"	UNI70	6
URB-PA36 B3	600	1 : 8	2"	UNI70	6
URB-PA38 B3	800	1 : 8	2"	UNI70	6

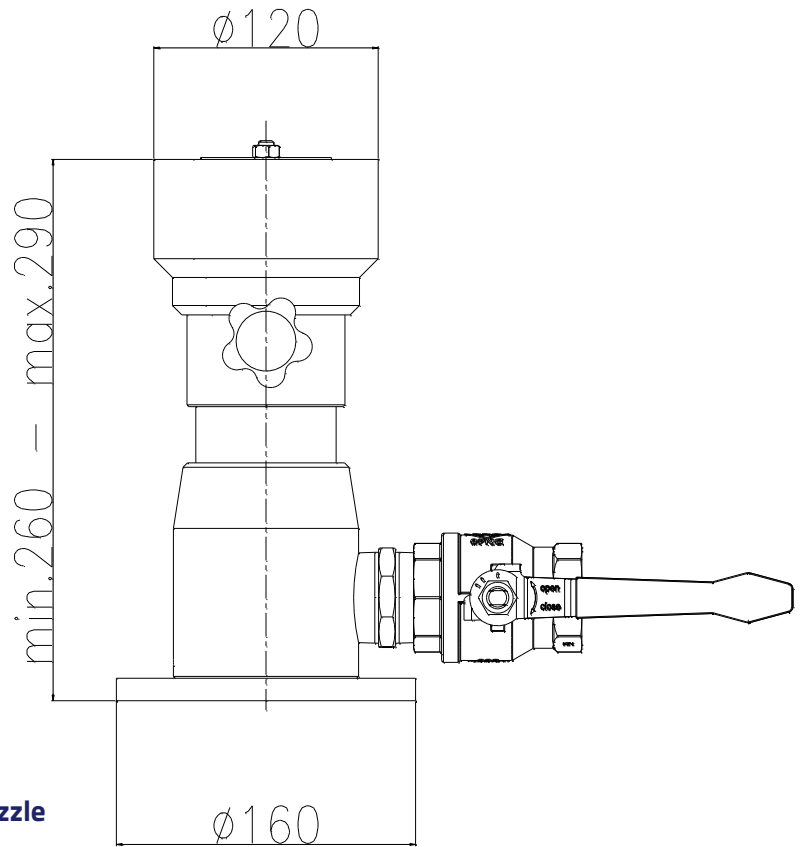


Caratteristiche Tecniche

Diffusore: Ottone/Bronzo/lega leggera/AISI 304/316
Corpo : Ottone/Bronzo/lega leggera/AISI 304/316
Flangia di ingresso a richiesta: Standard SDM
o altro Std.
Materiale flange: Acc. Carbonio – AISI 304/316
Diametro corpo ; 3"
Portata: da 500 a 6000 Lt./1' @ 8 bar
Adatto per uso con acqua o schiuma preformata
Peso approssimativo : 8 kg. (versione INOX)
Verniciatura flangia i: 1 mano di Fondo epossidico,
2 mani di smalto poliuretano RAL 3000
Solo acciaio al carbonio

Technical Characteristics

Diffuser: Brass/Bronze/light alloy/AISI 304/316
Body : Brass/Bronze/light alloy/AISI 304/316
Inlet flange on request : Standard SDM
or other Std.
Flange material: Carb. Steel – AISI 304/316
Body size : 3"
Flow rate: from 500 to 6000 Lt./1' @ 8 bar
Suitable for Use with water or premixed foam
Approx. Weight : 8 kg. (Stain. Steel version)
Flange Painting ; 1 coat of epoxy primer and
2 coats of polyurethane enamel RAL 3000
only for carbon steel



"X" indicare la portata specifica del bocchello
"X" Specify the real specific Flow Rate of the nozzle

Caratteristiche Tecniche

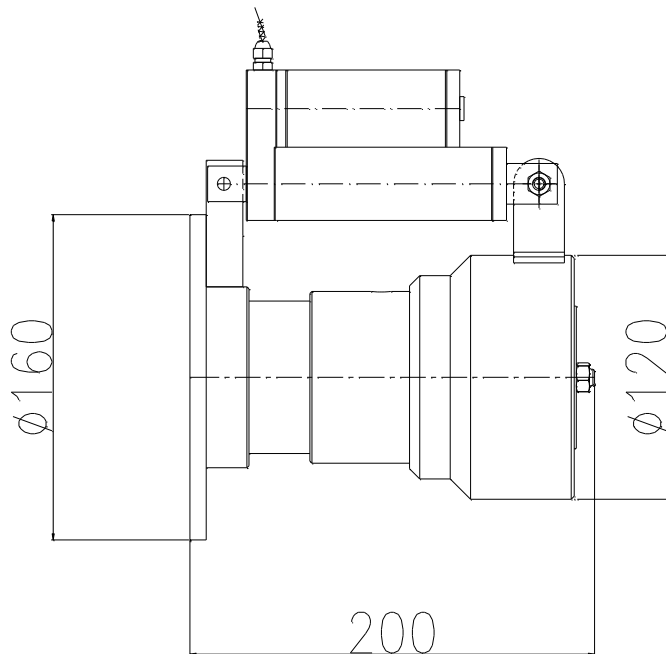
Diffusore: Ottone/Bronzo/lega leggera/AISI 304/316
 Corpo : Ottone/Bronzo/lega leggera/AISI 304/316
 Peso : 13 kg. (acciaio Inox)
 Mixer : Ottone/Bronzo/lega leggera/AISI 304/316
 Flangia di ingresso Standard SDM o altro Std a richiesta
 Materiale flange: Acc. Al Carbonio – AISI 304/316
 Diametro corpo ; 3"
 Gamma portate : da 500 lpm a 6000 lpm @ 8 bar
 Range miscelazione : 1% - 6%
 Tubo di aspirazione : 2.5 mt gomma spiralata
 Verniciatura flangia : 1 mano di Fondo epossidico, 2 mani di smalto poliuretano RAL 3000, solo acciaio al carbonio

Technical Characteristics

Diffuser: Brass/Bronze/light alloy/AISI 304/316
 Body : Brass/Bronze/light alloy/AISI 304/316
 Weight: 13 Kg. (stainless Steel)
 Mixer : Brass/Bronze/light alloy/AISI 304/316
 Inlet flange Standard SDM or other Std on request.
 Flange material: Carb. Steel – AISI 304/316
 Body size : 3"
 Capacity range : from 500lpm to 6000 lpm @ 8 bar
 Mixing range : 1% - 6%
 Pick up tube : 2.5 mt reinforced rubber
 Flange Painting ; 1 coat of epoxy primer and 2 coats of polyurethanic enamel RAL 3000, only for carbon steel

BOCCELLO REGOLABILE ELETTRICO MOD. DIQ-E
ADJUSTABLE WATER/FOAM NOZZLE DIQ-B-X

Data Sheet
 062

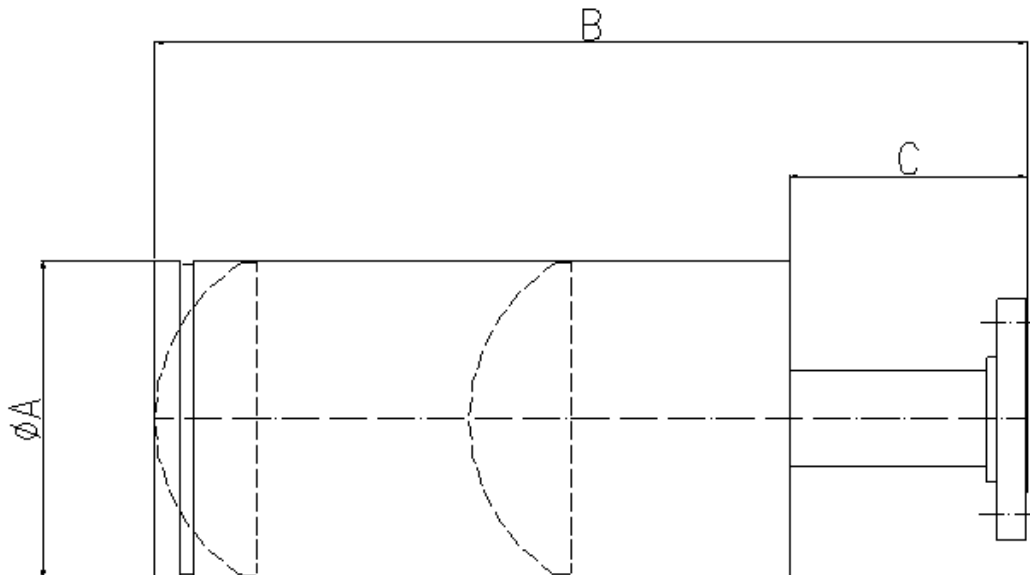


Caratteristiche Tecniche

Diffusore: Ottone/Bronzo/lega leggera/AISI 304/316
 Corpo : Ottone/Bronzo/lega leggera/AISI 304/316
 Flangia di ingresso a richiesta: Standard SDM
 o altro Std.
 Materiale flange: Acc. Carbonio – AISI 304/316
 Diametro corpo ; 3”
 Portata: da 500 a 3000 Lt./1’ @ 8 bar
 Conformazione getto : da pieno a conico circa 90°
 Pistone elettrico di regolazione 12V. c.c
 Adatto per uso con acqua o schiuma preformata
 Peso approssimativo : 9 kg.(versione INOX)
 Verniciatura flangia i: 1 mano di Fondo epossidico,
 2 mani di smalto poliuretano RAL 3000
 Solo acciaio al carbonio

Technical Characteristics

Diffuser: Brass/Bronze/light alloy/AISI 304/316
 Body : Brass/Bronze/light alloy/AISI304/316
 Inlet flange on request : Standard SDM
 or other Std.
 Flange material: Carb. Steel – AISI 304/316
 Body size : 3”
 Flow rate: from 500 to 3000 Lt./1’ @ 8 bar
 Jet pattern : full to conical with angle of about 90°
 Electric ram for jet pattern adjusting 12V.d.c
 Suitable for Use with water or premixed foam
 Approx. Weight : 9 kg. (Stain. Steel version)
 Flange Painting ; 1 coat of epoxy primer and
 2 coats of polyurethanic enamel RAL 3000
 only for carbon steel



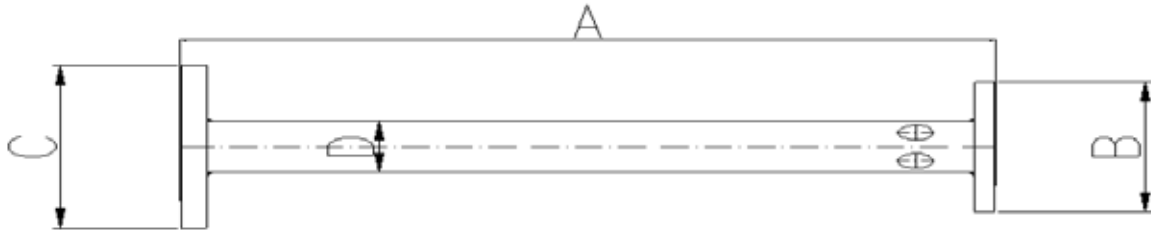
Caratteristiche Tecniche

Corpo e Ugello: AISI 304
 Ingresso: ANSI 150 RF o UNI - DIN
 Materiale flange: ASTM A 105 - AISI 304
 Rapporto di espansione : 1:60
 Verniciatura parti in Acc al C.:
 Fondo epossidico
 Smalto poliuretano RAL 3000
 Parti in acciaio inox. Satinate
 URG-M per lance flangiate
 URG-F per lance con raccordi

Technical Characteristics

Body and nozzle: AISI 304
 Inlet flange ANSI 150 RF or UNI - DIN
 Flange material: ASTM A 105 - AISI 304
 Expansion ratio : 1: 60
 Painting for carbon steel parts:
 Epoxy primer
 Polyurethanic enamel RAL 3000
 Stainless steel parts brushed
 URG-M for flanged nozzles
 URG-F for portable nozzles with coupling

MODELLO <i>MODEL</i>	PORTATA IT <i>flow rate it.</i> <i>At 5 bar.</i>	CONNESSIONE <i>COUPLING</i>	Dia A	B	C	PESO Kg. <i>WEIGHT Kg</i>
URG-M/F320	200	Flange 1 1/2" UNI 45-70	204	550	150	7
URG-M/F340	400	Flange 2" UNI 45-70	204	550	150	8
URG-M/F360	600	Flange 2" UNI 70	204	550	150	10
URG-M/F380	800	Flange 3" UNI 70	400	800	150	18
URG-F400	1000	Flange 3"	400	800	150	18
URG-F420	1200	Flange 3"	400	800	150	18
URG-F460	1600	Flange 3"	400	800	150	18



Caratteristiche Tecniche

Corpo: Acciaio al Carbonio- AISI 304 /316
 Ingresso : Flangiato ANSI 150 RF o UNI - DIN
 Materiale flange: ASTM A 105 - AISI 304 /316
 Pressione di funzionamento : 5 bar
 Verniciatura : 1 mano di Fondo epossidico,
 2 mani di smalto poliuretano RAL 3000
 nella versione in acciaio al carbonio
 Versione Inox : finitura satinata

Technical Characteristics

Body: Carbon Steel – AISI 304 /316
 Inlet : flanged ANSI 150 RF or UNI – DIN
 Flange material: ASTM A 105 - AISI 304/316
 Working pressure : 5 bar
 Painting ; 1 coat of epoxy primer and
 2 coats of polyurethanic enamel RAL 3000
 in the carbon steel version
 Stainless steel version : Brushed surface finish

MODELLO <i>MODEL</i>	Portata <i>Flow lt. Lt/1'</i>	A	B	C	D	PESO Kg. <i>WEIGHT Kg</i>
LBE2	200	700	2"	3"	2"	12
LBE4	400	700	2"	4"	2"	12
LBE6	600	700	3"	4"	3"	18
LBE8	800	700	3"	4"	3"	18
LBE10	1000	1000	3"	4"	3"	18
LBE15	1500	1000	4"	6"	4"	33
LBE30	3000	1000	6"	8"	6"	38

Portate intermedie a richiesta

Intermediate flow rates on request